



Genesis 1.1

A beautifully appointed, single bedroom loft & second storage loft, tiny home. Open plan living, allowing for plenty of storage space.



7.9 (L) x 2.4 (W) x 4.3 (H)

Turn-key Inclusions:-

- 1 x bedroom loft with wardrobe
- 1 x storage loft area
- Full size kitchen (double sink, rangehood)
- Breakfast bar with large gas strut window
- Pull out pantry
- Built in storage stairs
- Bosch electric oven & 4 burner gas stove top
- 3.5kW reverse cycle air-conditioning
- Separate lounge area
- Full size bathroom
- Composting toilet
- Laundry/linen cupboard
- Solar & grey water provision
- Gas hot water unit

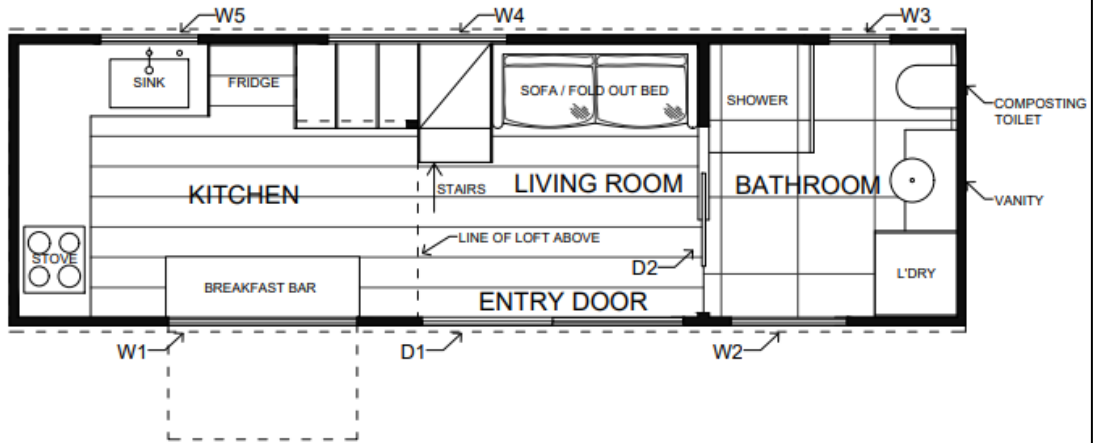
Completed home starts from:-

\$125,000**

* Please contact us for a full list of inclusions

* Pricing information provided in this flyer is indicative only & subject to change without prior notice, due to fluctuating prices in building materials and/or unforeseen economic circumstances and does not constitute an offer or contract.

GROUND FLOOR PLAN



INFORMATION

OVERALL DIMENSIONS: 7900 x 2400mm
 BATHROOM DIMENSIONS: 2260 x 2050mm
 KITCHEN CEILING: 2010mm
 BATHROOM CEILING: 2160mm

*NOTE: STAIRCASE HAS BUILT IN STORAGE CUPBOARDS & DRAWERS
 *NOTE: KITCHEN HAS OVERHEAD CUPBOARDS ABOVE BENCH

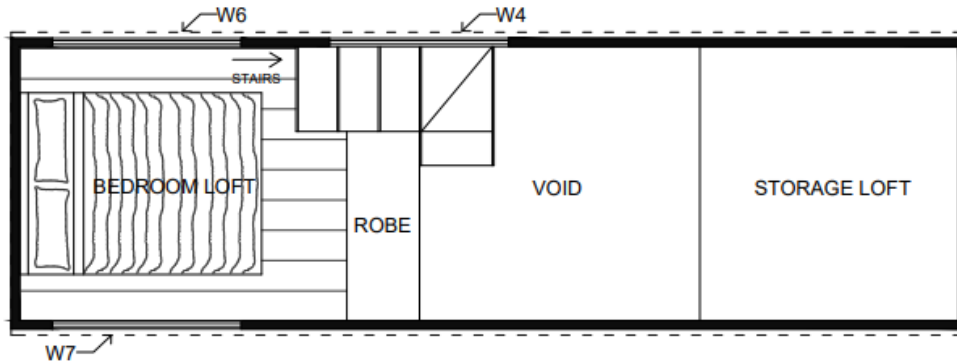
WINDOWS & DOORS

W1: GAS STRUT 900H x 1500W mm
 W2: BATHROOM (FROSTED) 1800H x 900W mm
 W3: LOUVER BAY (FROSTED) 1800H x 450W mm
 W4: STAIRCASE WINDOW 450H x 1420W mm
 W5: SPLASHBACK WINDOW 750H x 900W mm

D1: GLASS SLIDER 2400H x 2100W mm
 D2: CAVITY SLIDER 2040H x 660W mm

** NOTE NOT DRAWN TO SCALE

LOFT FLOOR PLAN



INFORMATION

OVERALL DIMENSIONS: 7900 x 2400mm
 BEDROOM LOFT: 2260 x 3300mm
 STORAGE LOFT: 2260 x 2140mm
 ROBE: 600D x 1600W x 1000H mm

*NOTE: STORAGE LOFT IS ADAPTABLE
 *NOTE: BEDROOM LOFT IS A CRAWL LOFT

WINDOWS & DOORS

W6: BEDROOM WINDOW 450H x 1500W mm
 W7: BEDROOM WINDOW 450H x 1500W mm
 W4: STAIRCASE WINDOW 450H x 1420W mm

** NOTE NOT DRAWN TO SCALE